



# **ritePen® 3.1** **(Standard Edition)**

## **User Manual**

## Table of Contents

What is ritePen? .....	2
ritePen Basics .....	2
How Does ritePen Work? .....	3
Entering Text .....	4
Gestures .....	5
Word Menu .....	7
Handwritten Shortcuts .....	10
User Dictionary .....	11
Main Menu .....	13
Settings .....	14
Floating Toolbar .....	23
Auto-Upgrades .....	23

---

## What is ritePen?

ritePen is an easy-to-use and powerful handwriting recognition application. It allows you to write anywhere on the screen of your Tablet PC, on an electronic whiteboard, with your pen tablet, or even with a mouse or on a touchpad. ritePen instantly converts your handwriting into text and enters the text into any Windows application, such as Microsoft Word, Notepad, Excel, Outlook, File Manager, Internet Explorer, etc. ritePen also allows pen control of your applications and desktop via ink commands.

## ritePen Basics

- Understands any handwritten style, does not require learning or training. Just write continuously, in whole sentences, on multiple lines of text, anywhere on the screen. Your writing will be automatically segmented into words, recognized and entered into the needed document or application.
- Supports simple and reliable gestures for common operations like adding a line break or space, deleting a wrong letter, copying and pasting, or adding punctuation and special signs via the pop-up keyboard. It also allows you to choose variants of recognized words from the answer list.

- *Does not interfere* with your regular use of a PC. Unlike other pen input applications, it intelligently detects scrollbars, menus, resizing areas, and other navigational and designated elements of application windows and allows seamless manipulation and navigation within your desktop application. ritePen application can also be manually switched between writing and mouse mode by single tap.
- ritePen software employs advanced *dictionary* technology. In addition to large *main dictionary* which includes common words, key medical terms, personal and geographical names, you can always add *your own personal or industry specific terms* to further increase recognition accuracy. You can simply type in new words into the custom user dictionary or import them from any text files or from the system clipboard.
- This version of ritePen software recognizes handwriting in seven *languages*: English, French, German, Italian, Portuguese, Russian, and Spanish. Simply switch your keyboard layout to another language and write - ritePen application will translate text in the currently active language as if you were typing. More languages are under development.
- With ritePen, you can automate all your routine desktop tasks by creating and using *Handwritten Shortcuts* (*pen macros, ink commands*): putting your signature in a document, pasting common texts without looking for them, opening favorite websites or frequently used documents are now at your fingertips.
- Unlike other handwriting recognition utilities, ritePen seamlessly works with *remote applications* over Citrix and RDP protocols, which is important for data input in many industries.
- When ritePen software is running on a Tablet PC or a Windows Vista PC, it further improves recognition accuracy by combining our riteScript technology with the embedded handwriting recognition engine, providing industry's *best recognition accuracy*.

We are constantly improving ritePen's features, recognition accuracy and usability. You can check for new upgrades at any time by clicking the *Check For Upgrade* button in the *About* box.


## **How Does ritePen Work?**

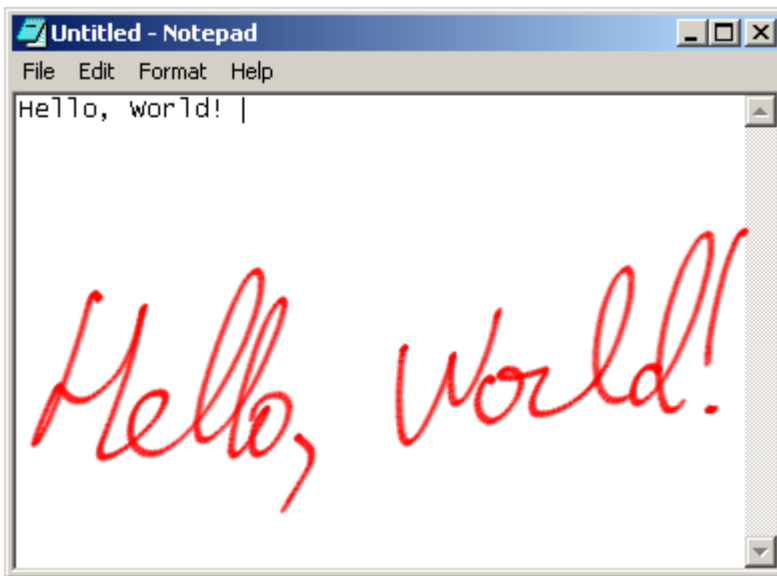
ritePen receives your handwriting, stroke by stroke, from a pen-enabled device and passes the strokes to the advanced "third generation" riteScript® handwriting recognition engine, which converts your handwriting into text. You write as you normally do, in words and phrases, and riteScript technology automatically segments your handwriting into words and lines. When you finished writing, ritePen receives the recognized text from riteScript, deletes handwritten strokes from the screen, and enters the text into the active text-enabled application, placing the text at the current position of the cursor. ritePen also recognizes your **gestures** to perform common operations like adding a space or a line break, deleting wrong symbols, or offering a

list of answers. ritePen does not interfere with your navigation and control operations, such as pointing and clicking, dragging application windows, selecting portions of text, etc. When you write and encircle a word, ritePen interprets it as a **handwritten shortcut** and looks for that word in your list of pen macros (ink commands) to execute the corresponding action.

*Note.* ritePen does not allow writing when a single *Ctrl* or a single *Shift* key is permanently pressed; this is done intentionally to prevent potential interference with the operation of multiple selection in popular applications which is often performed via Ctrl-Click and Shift-Click.

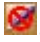
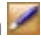
## Entering Text

Launch ritePen by opening it from the Start>Programs menu>EverNote>ritePen. The ritePen notification icon  appears in the Windows Taskbar. Now ritePen is ready to accept your writing anywhere on the screen and convert it into text. Open any text-enabled application, for example, Notepad, and write a few words on the screen.



Note the screen cursor changing to the pen style as you start writing. Once you complete writing, the converted text appears in the Notepad and your handwriting disappears from the screen.

What if you want to drag a window of an application or scroll through a document? ritePen will not interfere with your actions in most Windows applications. In other words, if you drag an application window holding your pen on its title bar, or scroll the window using your pen, or press menu or toolbar buttons, your actions will not be interpreted as writing a new word. For this reason, you should always *start* a new portion of your *writing outside* title bars, scrollbars, toolbars or menus of application windows. However, you can freely *cross* all such bars and menus while you are writing.

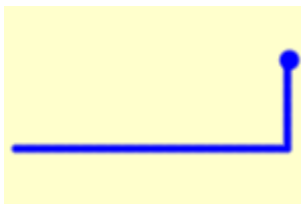
In order to *select* a word in the typed text, double tap on it. To select a fragment of the text, tap and hold at the beginning of selection area. Then drag the pen, as you typically do with a mouse. The initial holding time is slightly longer than with a mouse, because ritePen needs a short time to realize that you intended selection and not writing. Sometimes, a line may be drawn through your selected fragment of the text; stop dragging at the end of your selection, continue holding the pen down until the line disappears and turns into the selection. If your work involves extensive text selection, you may choose to temporarily disable ritePen by tapping on its notification icon in the taskbar or ritePen **toolbar**. Its appearance will change to . Tap on the icon again to re-enable ritePen .

*Note.* In order to enter recognized handwritten text into the Microsoft Vista Search box located at the bottom of the Start Menu, you have to *begin* writing within that box; then you can continue writing anywhere on the screen until you stop and the text is recognized.

You may choose to use your digital pen as the only writing tool, while your mouse, touchpad, trackball and other "navigational" devices will not produce digital ink input even when ritePen's writing mode is on. To enable this feature, check the box *Use only pen for input* in **Settings>General**. Your pen will still perform intelligent navigation of the desktop as explained above.

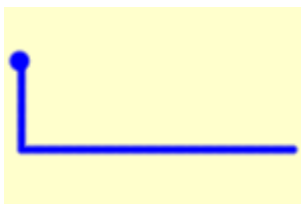
## Gestures

ritePen allows basic pen-based text editing via simple gestures, so you can perform most common editing operations without touching the keyboard. Each gesture must be written in one continuous stroke, as shown in the table below. The starting dot shows the beginning point of each stroke.



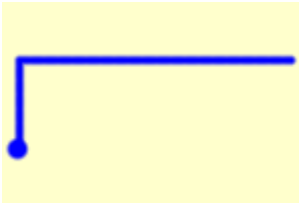
**Line break** (*down then left, horizontal part at least twice as long as the vertical one*)

Inserts line break at the current position of the text cursor in the active application.



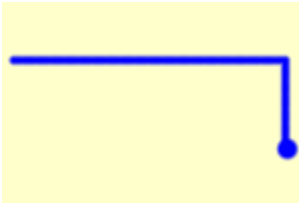
**Space** (*down then right, horizontal part at least twice as long as the vertical one*)

Inserts space at the current cursor position.



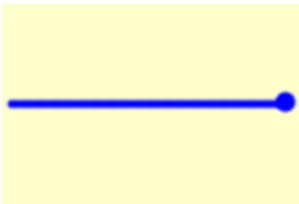
**Tab** (*up then right, horizontal part at least twice as long as the vertical one*)

Inserts tab at the current cursor position.



**Undo** (*up then left, horizontal part at least twice as long as the vertical one*)

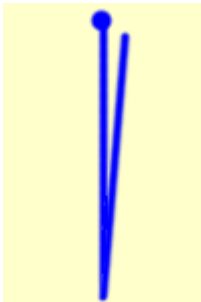
Undoes the previous action(s).



**Backspace** (*right to left, not too short, keep the stroke horizontal*)

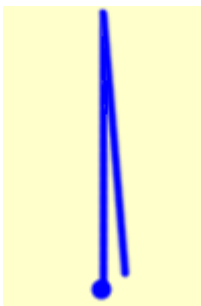
Deletes the symbol immediately preceding the current position of the text cursor or the selected text in the active application.

*Note.* This gesture may conflict with the *Back* gesture of *Pen Flicks*. You might want to disable the *Back* gesture in *Pen Flicks* or write your *Backspace* gestures slower to be recognized by ritePen.



**WordMenu** (*down then up, writing over the downward part; keep the strokes vertical*)

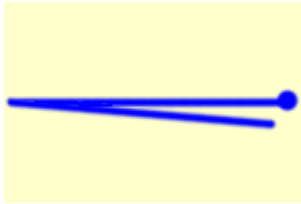
Retrieves the list of answers for all words for the most recent portion of your writing.



**Punctuation pane** (*up then down, writing over the upward part; keep the strokes vertical*)

Launches the pane with punctuation signs, special symbols and navigation keys. Click on a symbol to add it to the text at the current cursor position.

,	'	(	)	*	\$	↶	↷	✕
.	"	[	]	&	£	→	←	PgUp
:	;	{	}	^	¥	Ins	Del	PgDn
-	+	<	>	%	€	Home	↑	End
/	\	_		©	®	←	↓	→
!	?	~	@	#	=	...	└	↶



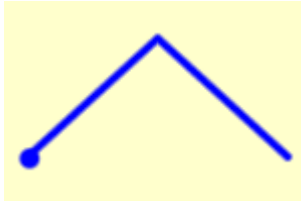
**Copy** (*left then right, writing over the leftward part; keep the strokes horizontal*)

Copies the selected object into the system clipboard (same as pressing Ctrl-C)



**Cut** (*right then left, writing over the rightward part; keep the strokes horizontal*)

Cuts the selected object into the system clipboard (same as pressing Ctrl-X).



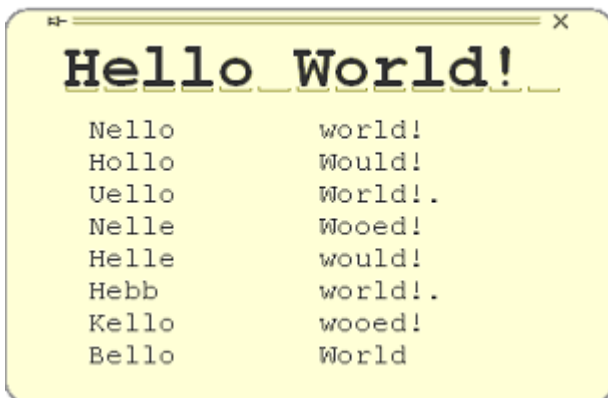
**Paste** (*right-up then right-down, symmetrical, at the angle of about 45 degrees*)

Pastes an object from the system clipboard to the current cursor position of the active window (same as pressing Ctrl-V).

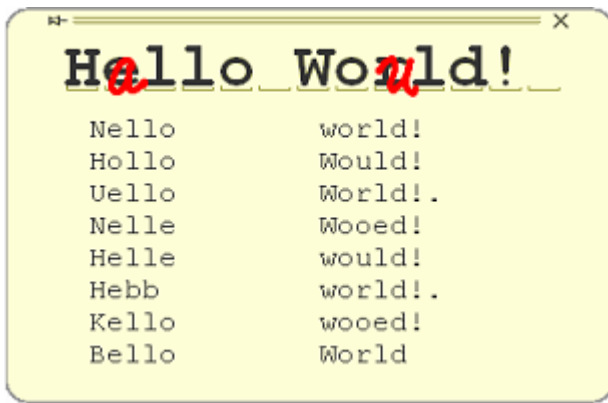
Additionally, the **Capitalization** gesture - a straight-up vertical stroke alternating the letter case, is available in the Word Menu as explained in the next section.

## Word Menu

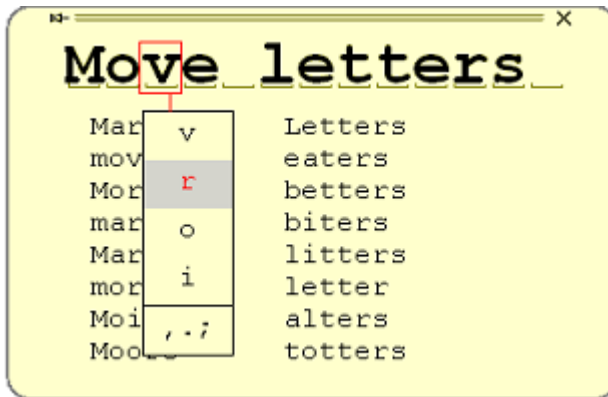
ritePen WordMenu displays the list of alternative recognition answers and allows correcting recognized text and selecting other answers for recognized words. It lists the best answer for each word in the top line and alternatives below in smaller font. Click on any item to substitute the top word with the chosen one.



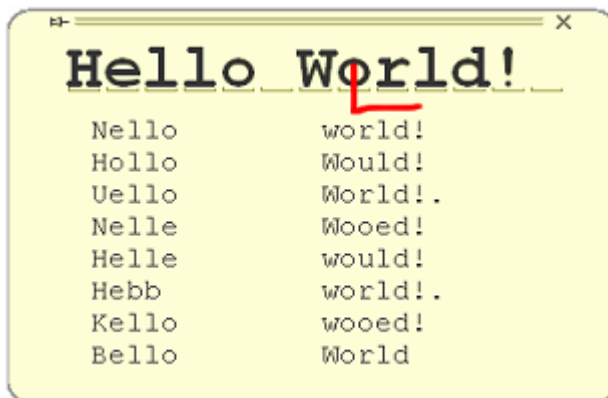
If there are no correct answers in the list you can correct words in the top (boldfaced) line by directly overwriting incorrect letters:

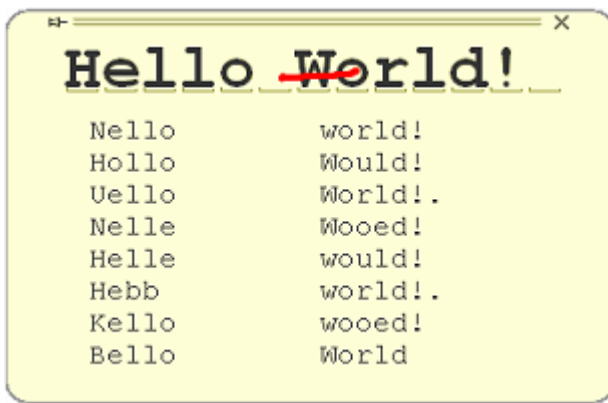


(When correcting multiple letters at once, we recommend writing them in the left-to-right order.) If you don't find correct words in the WordMenu but your top answer has just a couple of letters misspelled, you can try letter alternatives by clicking on such misrecognized letters, as illustrated below:

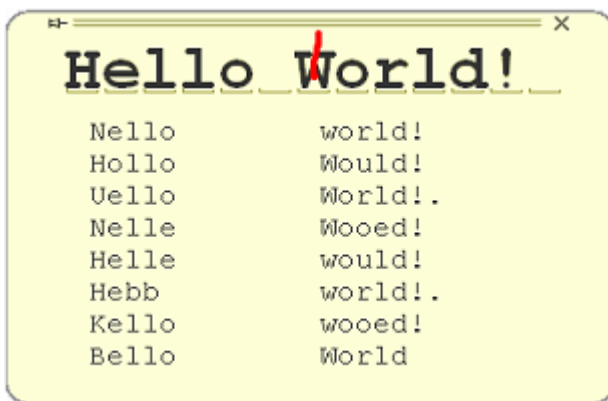


You can also use gestures to add space, remove letters, and capitalize them. All these gestures are "positional": the desired action happens at the point where the gesture was started. For example, to add a space before the letter, draw the *Space* gesture starting in the middle of the letter; to delete a letter, draw the *Backspace* gesture starting in the middle of that letter, as shown below:

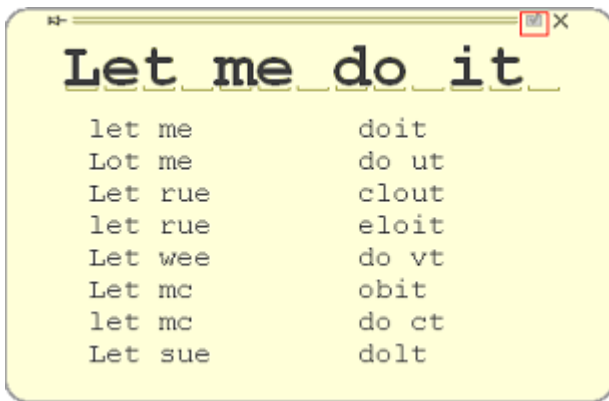




Use the "capitalize" gesture (a line straight up) to alternate the letter case (this gesture started from the capital letter 'W' up will turn it into the lower case 'w').



- The WordMenu window normally appears near the current position of the mouse pointer and then slowly fades away (you can customize the fade-out time in [Settings > WordMenu](#)). You may pin its position to a desired location on the screen by clicking the "pin" icon in the left top corner of the window. After that, you may drag the window where you want it to be placed on the screen using the top bar.
- To make sure your changes in the Word Menu are automatically sent to the target application, check the "Auto apply changes" option in the *WordMenu* tab of the Settings dialog. If this option is disabled, a "checkmark" icon will appear in the top right corner of the WordMenu window; you would have to click on that icon to apply the changes once you are done with editing.



- Use the 'x' button in the top right corner of the WordMenu window to close it.

## Handwritten Shortcuts

In addition to seamless data input, ritePen automates your routine desktop tasks such as application launch, opening documents, entering standard texts and many other operations. You can assign a **handwritten shortcut (pen macro, ink command)** to any such operation; then, all it takes to perform the operation is writing and encircling a shortcut. For example, if a letter "h" is assigned to opening your home page in the default browser, then writing and encircling the letter will launch the browser and jump to the website as illustrated below.



Another helpful example is adding your signature to a document by writing and encircling the shortcut "sign":



Best regards,  
Joe Jones  
[joe@jones.com](mailto:joe@jones.com)  
+1.408.555.2368

You can also use handwritten shortcuts to abbreviate long and frequently used words, to open repeatedly used documents or paste frequently used texts, etc.

In addition to general text, handwritten shortcuts can display current date and time.

*Note.* ritePen Pro has substantially broader capabilities of handwritten shortcuts. It allows emulating any keyboard activities, including special and functional keys, adds a few helpful commands, etc. Keep in mind that your profiles designed in ritePen Pro may not work in the standard edition of ritePen.

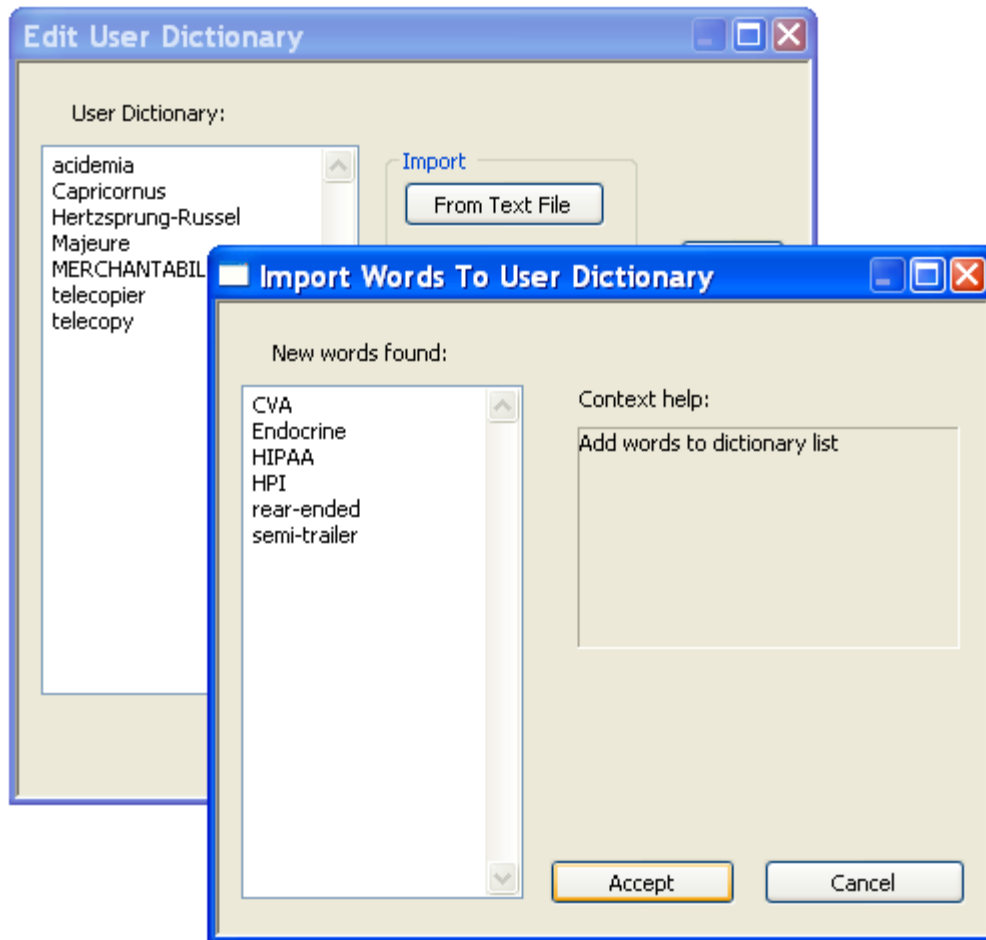
Creating and editing handwritten shortcuts is easy: use the **Macros** tab in ritePen Settings as explained below.

## User Dictionary

ritePen recognizes your handwriting in any language using large Main Dictionary for that language. Such dictionaries come with ritePen and include many dozens or even hundreds of thousands of common words and proper names; they are sufficient for accurate recognition of generic handwritten texts. Still, many users need to recognize special or personal "terms", such as drug names, personal emails, scientific terms, names of friends and co-workers, industry or company specific product names, etc.

To facilitate this need, ritePen includes an easy method of creating and editing custom **User Dictionary** for any supported language. You can add words to the User Dictionary manually at any time; import them from text files, such as clinical reports, contracts, educational materials; import new terms directly from the Windows Clipboard or from the Microsoft Office Outlook's Personal Address Book; you can also edit the list of words. ritePen will automatically analyze your text source and extract only new terms from the imported file. You will see a preview window with the words absent in the main dictionary and in the previously created portion of the User Dictionary. With this incremental method of building User Dictionary based on your real-life experiences, you can avoid excessive research and overloading User Dictionary with large word sets that can slow down handwriting recognition and degrade its accuracy.

Below is an illustration of importing from the text file (in this case, clinical report).



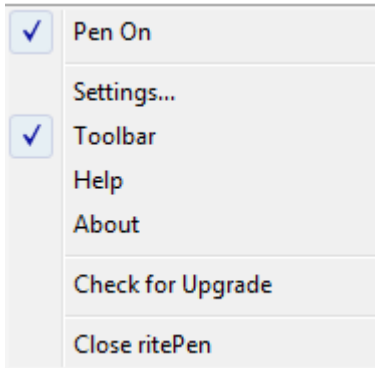
On the screenshot, you can see the *User Dictionary* on the left and the list of new words extracted from a text file in the *Import Words To User Dictionary* window.

Details on building and editing User Dictionary are presented in the [Settings>Dictionary](#) section below.

*Note.* ritePen Pro allows multiple user dictionaries, comes with a broad set of pre-defined "lexicons" and supports context aware recognition where pre-defined lexicons and user dictionaries are combined into "recognition profiles" and assigned to forms fields and other applications for additional gain in recognition accuracy.

## Main Menu

Right-click or tap and hold ritePen notification icon, or right-click ritePen Toolbar to open Main Menu.

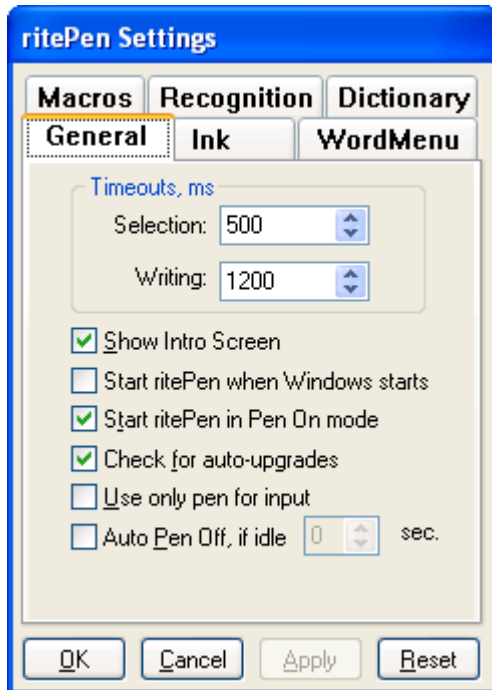


- **Pen On** is checked when writing mode of ritePen is enabled and unchecked otherwise.
- **Settings** opens the [ritePen settings](#) tabbed dialog, providing customization options.
- **Toolbar** allows displaying or hiding the ritePen [Toolbar](#).
- **Help** displays this reference page.
- **About** displays copyright and version information about the product and its components and allows checking for product upgrades.
- **Check for Upgrade** connects to ritePen's online auto-upgrade system to check for available product upgrades.
- **Close ritePen** quits the application.

## Settings

After calling up the ritePen Settings dialog box, you can change the following settings: **General**, **Ink**, **Recognizer**, **Dictionary**, **WordMenu**, and **Macros**.

- **General**



- **Timeout for Selection.** When you select a portion of text by pressing and dragging your pen across the selection, ritePen briefly draws an ink stroke. By changing the *Timeout for Selection*, you shorten the time that stroke appears on the screen before it reverts into selection.
- **Timeout for Writing.** When you are entering text using ritePen, the application recognizes your writing continuously. When you lift a pen after you have completed a portion of writing and want the text to appear in the target application, ritePen waits for a short while to give you the opportunity to "dot your i's and cross your t's". In order to speed up the recognition process, you may shorten this time interval. In case you shorten the *Timeout for Writing*, make sure that the timeout is still sufficient for you with your individual writing speed to put the dots/crosses/diacritic signs where they belong.
- **Show Intro Screen.** If selected (check-marked by default), ritePen displays the introductory splash screen on application start.
- **Start ritePen when Windows starts.** Adds ritePen to the Startup program group and ensures its automatic launch after system reboot.
- **Start ritePen in Pen On mode.** This choice is active (check-marked) by default, so that starting ritePen initiates the Pen On mode and ritePen accepts and recognizes handwriting.

Removing the checkmark instructs ritePen to start in the Pen Off (Mouse On) mode. To turn it on, click the ritePen tray icon to activate writing and recognition.

*Note:* You can also force ritePen to start in (or switch to) pen Off or On mode by specifying the command line key "/0" or "/1" after the name of its executable (e.g. "ritePen.exe /0" to switch the pen mode to off). Additionally, you can specify the parameter "/2" to toggle ritePen between the Pen Off and Pen On modes, which is especially helpful if you are using a hardware button to switch writing on and off. This method of switching ritePen mode can be used even if ritePen is already running (alternatively, you can send a pre-defined Windows message to the application to alter its state or query what state it is in now).

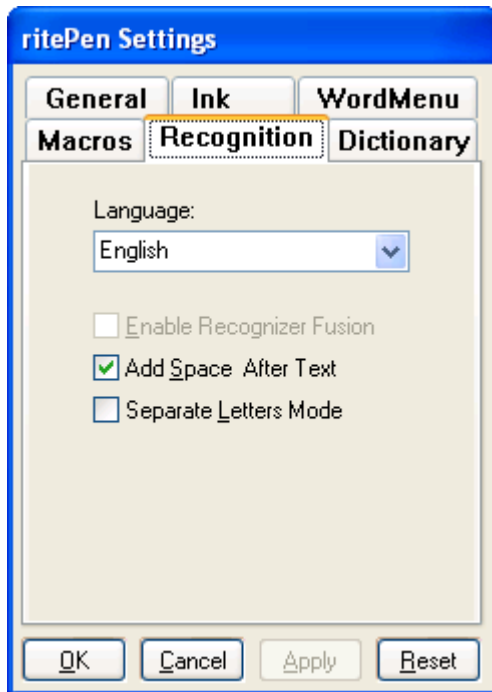
- **Check for auto-upgrades.** If selected (check-marked by default), ritePen periodically connects to our server and notifies you if new upgrades are available.
- **Use only pen for input.** When enabled, this option suppresses writing with a mouse, trackball, touchscreen and other navigational devices and allows writing only with the pen. This is helpful, for example, on convertible Tablet PCs and Ultra-Mobile PCs where users wish to fully utilize pen in the tablet mode and avoid writing in the keyboard mode.
- **Auto Pen Off, if idle.** When enabled, causes ritePen to automatically turn writing mode off after the specified time without writing has elapsed. This option is helpful if you are predominantly using your pen as a pointing and navigation tool and only occasionally input text via ritePen. Note that you have to turn back the pen mode manually.

- **Ink**



- **Pen Style.** Clicking on the Pencil or Pen icon changes the appearance of handwriting on the screen between the standard "pencil" look and the calligraphy pen.
- **Pen Size.** Select pen thickness between Fine, Thin, Medium, or Thick.
- **Pen Colors.** Choose from 32 different ink colors.

- **Recognition**



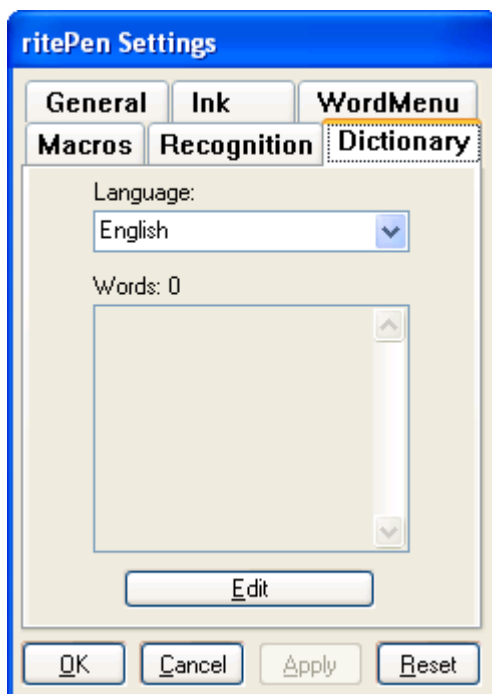
- **Installed recognition engines.** This version of ritePen can recognize English, French, German, Italian, Portuguese, Russian, and Spanish handwriting. ritePen can be installed with different language sets. The set of installed engines is displayed in the above box for the information purpose. The active language for which recognition is currently performed is defined by the *layout of system keyboard* currently present on your PC; for example, switching keyboard layout from English to French instructs ritePen to switch handwriting recognition engine between these languages.
- **Enable Recognizer Fusion.** When ritePen works on a Tablet PC or on a Windows Vista PC, it fuses (combines) its riteScript handwriting recognition engine with the "embedded" system recognizer, thus improving the recognition accuracy compared with each of the two engines. You can optionally switch off the fusion of recognition engines, in which case your handwriting will be recognized by the riteScript engine alone.  
*Note:* On non-Tablet PC and non-Windows Vista computers this option is not available and the item is grayed out. Recognizer fusion is currently available for English language only.
- **Add Space After Text.** When enabled, ritePen will add a space after each recognized word. You may disable this option to recognize certain data types, such as Web addresses or

emails, where spaces between words are unwelcome. You may always add a space using the space **gesture**.

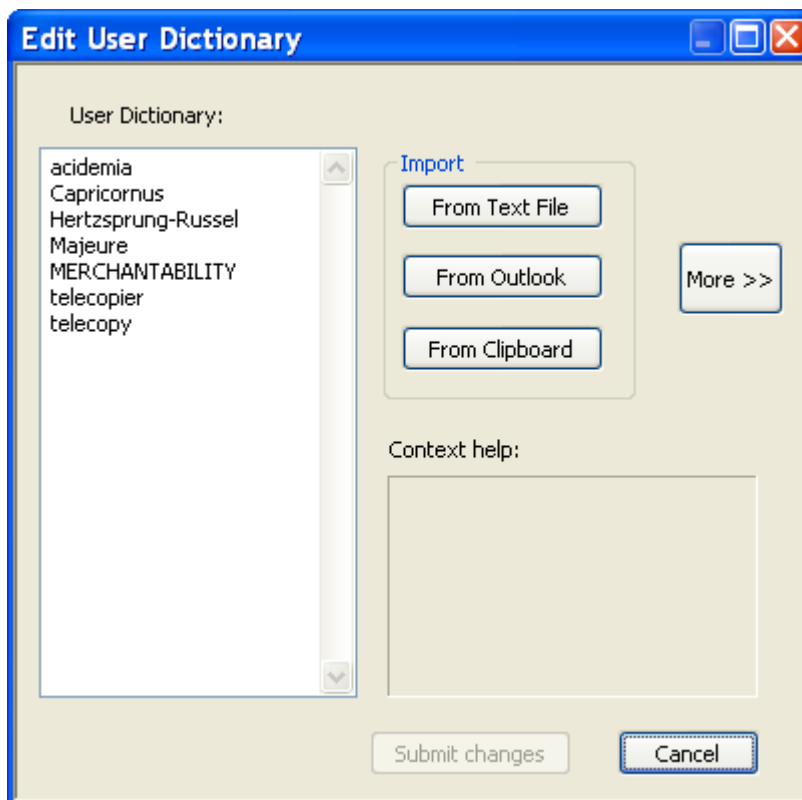
- **Separate Letters Mode.** Check this box if you write in separate letters and never use cursive, connected handwriting (this option is especially important when you are filling out handwritten forms with grid or "comb" fields). This increases recognition accuracy for disconnected "separate letters" writing, but will fail the recognition of connected script.

- **Dictionary**

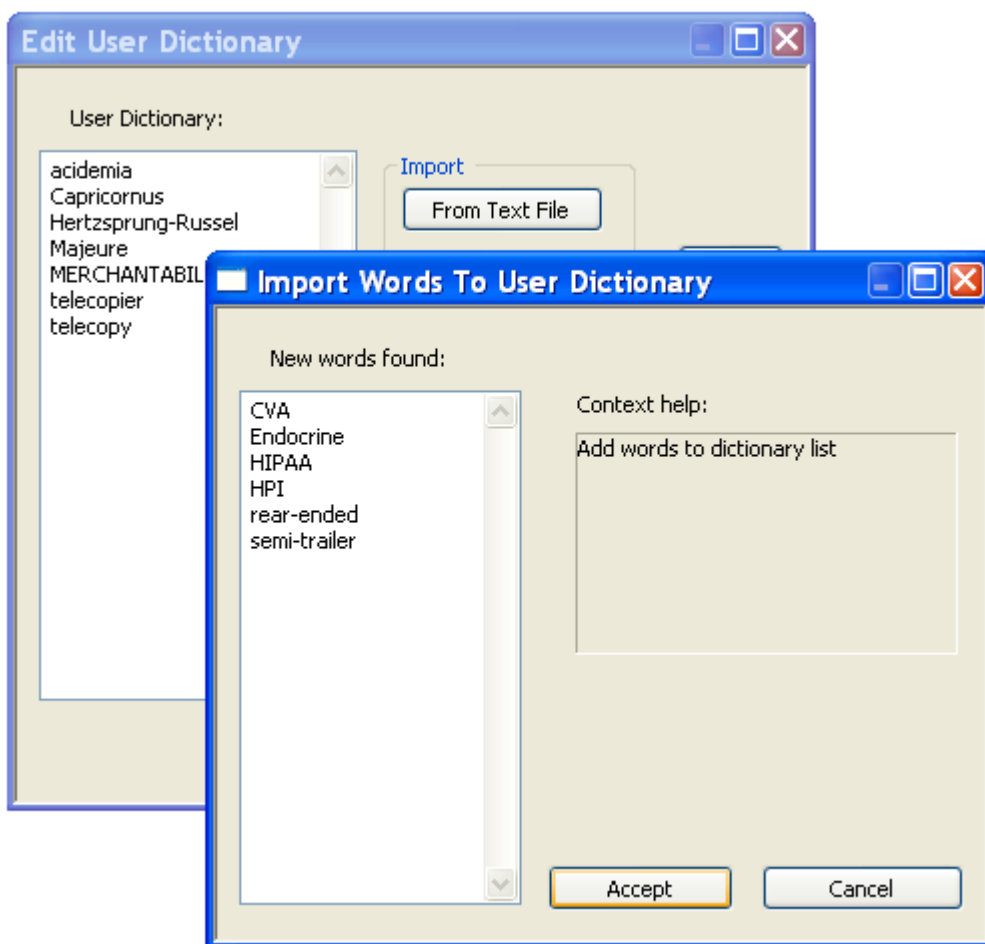
This page allows you to modify contents of the custom **User Dictionary** for a particular language by adding, removing and editing new words manually, as well as importing them from text files, Outlook's Personal Address Book, or Windows Clipboard.



- **Language.** Choose the language of the dictionary you want to modify.
- **Word List.** Total number of words in the User Dictionary is displayed on top of the scrollable word list.
- **Edit User Dictionary.** Click this button to open **Edit User Dictionary** panel:



- **User Dictionary.** Editable list of dictionary entries on the left side of the panel. You can add, delete or correct words in the list like in a regular text editor.
- **Import section.** Allows importing words into the User Dictionary from text files, Outlook Personal Address Book, and Windows Clipboard.
- **More >>.** This button opens panel with additional controls of word importing from text sources.
- **Context help:** Prompts context dependent actions as you browse through the Edit User Dictionary Panel.
- **[Import] From Text File button.** You can import words from any text source (clinical report, homework assignment, contract, etc.) saved as *.txt* file. When you click the "From Text File" button, you are offered file selection dialog. After you select the file, ritePen splits it into words, checks the presence of each word in the Main Dictionary and in the existing portion of User Dictionary, and lists all new words in the preview ***Import Words To User Dictionary*** window

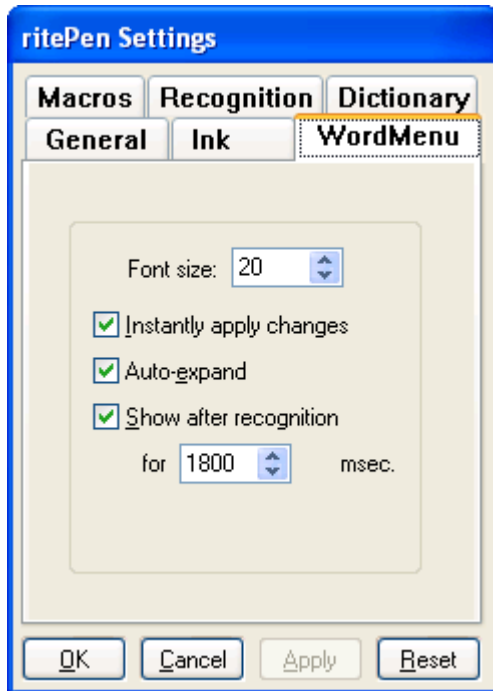


You can edit, remove or add new words in the preview window and add them to the User Dictionary by clicking the "Accept" button.

- **[Import] From Outlook button.** If you are using Microsoft Office Outlook, you can import all names and emails from your Personal Address Book into the User Dictionary. After pressing on this button, ritePen extracts names and emails from the address book, checks their presence in the existing vocabularies, and displays all new words in the "Import Words To User Dictionary" window, similarly to importing from text file. Same as previously, you can edit, remove or add new words in the preview window and add them to the User Dictionary by clicking the "Accept" button.
- **[Import] From Clipboard button.** Similarly to two previous items, you can capture the text into Windows Clipboard (for example, selected portion of a web page or a document) and press this button to add to User Dictionary all new words contained in that text.

- **WordMenu**

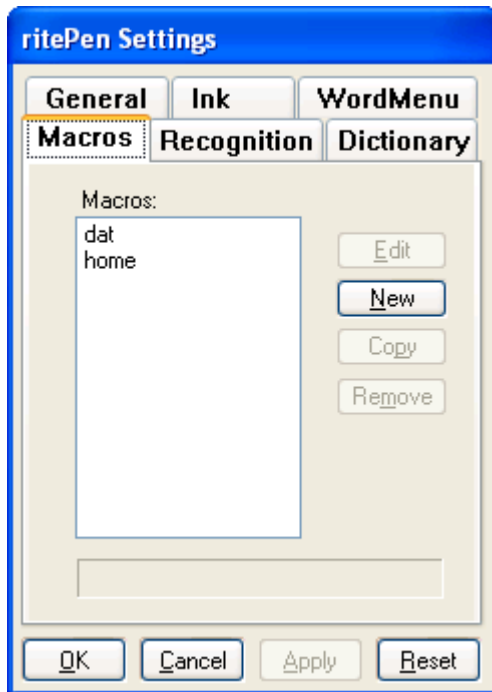
These settings control the behavior of the **WordMenu pop-up window** which allows quick correction of misrecognized words and selection of alternative answers from the list.



- **Font size.** Letter size for answers in the WordMenu.
- **Instantly apply changes.** When you make changes to the recognized text in the WordMenu window, they can be sent automatically to the target application. Alternatively, you can first make all changes and then click the "checkmark" icon in the top right corner of the WordMenu window to apply all changes in a single action.
- **Auto-expand.** When this option is checked, WordMenu will include all feasible recognition alternatives for each recognized word and enable selection from the list of alternatives. If unchecked, only a single line with top alternatives will be displayed; letters can be corrected manually as explained above.
- **Show after recognition.** If checked, the WordMenu window will pop-up after each ritePen's recognition session and will fade-off after the timeout indicated in the next line. If unchecked, WordMenu will not automatically appear on the screen: it will take a WordMenu **gesture** or a click on the WordMenu button in the **Toolbar** to call up the window.

- **Macros**

These settings allow creation and editing of **Handwritten Shortcuts** as explained above.



- **Macros:** List of your handwritten shortcuts.  
This version of ritePen comes with two helpful sample macros: *dat* inserts date and time into your current document; *home* opens your browser and directs it to the main ritePen product page (you can customize this shortcut or create a new one to jump to any website).
- **Edit.** Select a shortcut you wish to edit and press this button to open editing panel.
- **New.** Click this button to add a new shortcut.
- **Copy.** Copies the description and body of the selected shortcut into a new shortcut, allowing easy assigning of multiple names to the same macro.
- **Remove.** Select a shortcut and press this button to remove it from the list.
- **Context help line.** Displays the description of the selected shortcut.
- **OK/Cancel/Apply/Reset.** Standard action buttons (pressing "Reset" undoes all changes you've made after the Macro tab was opened).
- **Edit Macro.** This panel opens when you press the "New" button or the "Edit" button when a shortcut is selected in the list.
  - **Shortcut type.** Before entering the shortcut, use the radio buttons in the top right side of the panel to choose between the **"Text"** and the **"Open/Execute"** type of shortcuts. The first type enters text into the target application and the second one opens documents, websites, and applications.

The screenshot shows the 'Edit Macro' dialog box with a blue title bar. It contains the following fields and controls:

- Name:** A single-line text input field.
- Macro type:** A group box containing two radio buttons: 'Text' (which is selected) and 'Open/Execute'.
- Description:** A single-line text input field.
- Text to insert:** A multi-line text area with vertical scroll bars.
- Buttons:** 'Submit' and 'Cancel' buttons at the bottom right.

- **Name.** Abbreviated name that you will be writing and encircling every time you invoke the shortcut action.  
*Note:* In this version of ritePen, abbreviated *Name* of pen macro should be in English; you can use words in any language in the Text you wish to insert when the handwritten shortcut is executed.
- **Description.** Brief memo.
- **Text to insert (for the "Text" shortcut type).** Multi-line text that will be placed into the target text-aware application when you invoke the shortcut.
- **Edit Macro (for "Open/Execute" shortcut type).** This panel opens when you press the "New" or the "Edit" button and choose the "Open/Execute" shortcut type.

This screenshot shows the 'Edit Macro' dialog box with the 'Open/Execute' radio button selected. The fields and controls are:

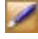
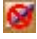
- Name:** A single-line text input field.
- Macro type:** A group box with 'Text' and 'Open/Execute' (selected) radio buttons.
- Description:** A single-line text input field.
- File name/URL/Executable to launch:** A single-line text input field with a browse button (..) to its right.
- Parameters (for executables):** A single-line text input field.
- Buttons:** 'Submit' and 'Cancel' buttons at the bottom.

- **File Name/URL/Executable to launch (for "Open/Execute" shortcut type).** Type in, paste or select full path to file (such as *c:\projects\mydocument.doc*), full URL (for example, *http://ritescript.com*) or application name (for example, *winword.exe*) that will be opened when you run the shortcut.
- **Parameters (for executables).** Optional parameters to start the application with.

## Floating Toolbar

Once you activate the always-on-top ritePen Toolbar, you can position it at any location on your screen by dragging by the double bar on its top right side. It will remember the position and will always appear there. Right-click anywhere on the bar to open the ritePen's **menu**.



- **Pen On/Off**  
Clicking the Pen On/Off icon toggles between the Pen On mode  and the Pen Off mode  exactly as if you had clicked on the ritePen notification icon in the task bar.
- **Open Punctuation Pane**  
Clicking the Add Punctuation Symbol icon launches the pane with punctuation signs and special symbols exactly as if you had made the "Punctuation pane" **gesture**.
- **Settings...**  
Clicking the Settings icon calls up the ritePen Settings dialog box described in the ritePen **Settings** section above.

## Auto-Upgrades

ritePen includes a convenient online auto-upgrade system which notifies you about new releases and upgrades. It is also used to offer instructional materials, tips, surveys and other information. The auto-upgrade system periodically connects to the ritePen auto-upgrade server and compares your installed version with the latest available version of ritePen. The auto-upgrade system does **not** capture or transfer any private info from your PC to the server. If the installed version of ritePen requires an upgrade, you will receive a pop-up notification with an upgrade offer and can instantly download the upgrade from the Ritescript website or purchase it from our online store. If you are not interested in the immediate upgrade, you may elect to be reminded later or skip the offer of this particular upgrade altogether. If your company's IT policies or personal preferences conflict with receiving the auto-upgrade info, you can disable the check for auto-upgrades in the Settings>General as explained above. You will still be able to check for upgrades manually from the "About" box or the "Check for Upgrades" item in the Main Menu.

Ritescript (a division of Evernote Corp.)

710 Lakeway Drive #290

Sunnyvale, CA 94085

U.S.A.

[info at ritescript dot com](mailto:info@ritescript.com)

[www.ritescript.com](http://www.ritescript.com)

Copyright © 2001-2009 Evernote Corp. All rights reserved.

ritePen, Ritescript and Evernote are registered trademarks of Evernote Corp. All other trademarks are recognized as the property of their respective owners.